

**Artemide**  
ARCHITECTURAL

LA11437

# Artemide Somnium Stand Alone Circular LED Suspension

SOURCE: <https://www.davidvillagelighting.co.uk/product/Artemide-Somnium-Stand-Alone-Circular-LED-Suspension/10002680>

## PRODUCT DESCRIPTION

**Designer:** Carlotta de Bevilacqua

### Artemide Architectural Somnium Stand Alone Circular LED Suspension Light



Artemide Architectural Somnium Stand Alone Circular LED Suspension is a minimalist circular suspension with advanced optical technology that ensures  $UGR < 16$ , eliminating glare and supporting visual comfort. The lens and antiglare are fused, making the louvre an essential structural element for optimal light control.

The Circular version delivers balanced light distribution, with precise direct emission and indirect emission that work with the surrounding space. This 3000K version provides a warm white light, with Push/Dali dimming and options for Ceiling Power Supply or Recessed Power Supply, depending on the selected product code.

Artemide quotes efficiency of up to 165 lm/W for Somnium Stand Alone, combining high performance with reduced weight and material use.

Best suited to dining spaces, home offices, meeting rooms, reception areas, and calm hospitality interiors where circular, low-glare light is required.

**Please note, this product is also available in 4000K and with Artemide App dimming compatibility. [Contact us](#) for pricing and information.**

## PRODUCT SPECIFICATION

**Light Source:** **Circular 832:** 27W, 3000K, 4452 Lumens  
**Circular 1100:** 36W, 3000K, 5936 Lumens

**IP Code:** 20

**Dimming:** Dimmable via Push to make/Switch and Dali dimming systems. Please consult your electrician, additional wiring may be required on site.

**Dimensions: Circular 832:**  
Diameter: 83.2cm

**Circular 1100:**  
Diameter: 110cm

Cable Length: 200cm (Max)

Circular 832



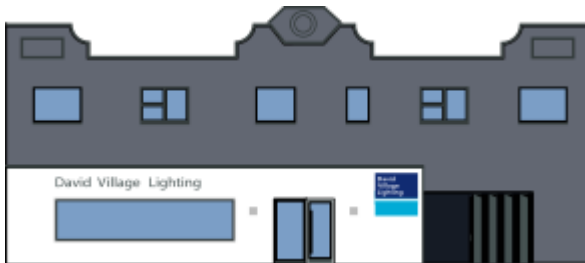
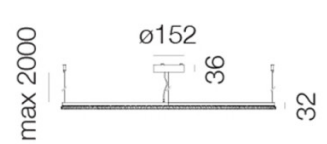
832



Circular 1100



1100



**For all sales and technical enquiries, please contact:**

+44 (0)114 263 4266

[info@davidvillagelighting.co.uk](mailto:info@davidvillagelighting.co.uk)

[www.davidvillagelighting.co.uk](http://www.davidvillagelighting.co.uk)