

ANGLEPOISE®

Anglepoise Original 1227 Floor Lamp

LA3173

SOURCE: <https://www.davidvillagelighting.co.uk/product/Anglepoise-Original-1227-Floor-Lamp/15597>



PRODUCT DESCRIPTION

Designer: George Carwardine

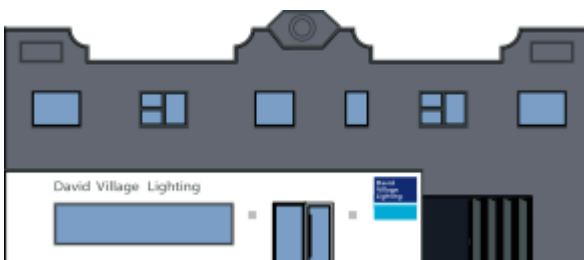
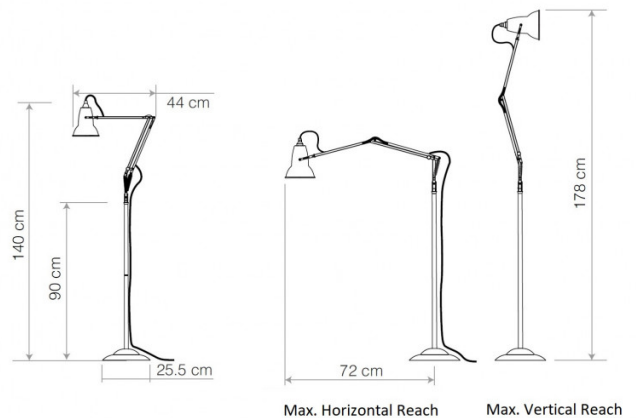
Anglepoise Original 1227 Floor Lamp

First launched in 1935 as a table lamp, the Anglepoise Original 1227 Floor Lamp is an instantly recognisable light that celebrates classic British design. Designer and engineer George Carwardine invented the spring mechanism utilised throughout the [Original 1227 Collection](#), which allows the lamp to be easily adjusted and positioned to produce focused lighting.

The Anglepoise Original 1227 Floor Lamp is available in Dove Grey, Jet Black, and Linen White. These neutral finishes add a sense of calm and balance to any interior. The directional lighting is perfect for use as a reading light in a study, reading nook, or living area. Display in multiples in an office space to provide a cohesive, timeless theme that strikes the balance between style and functionality.

PRODUCT SPECIFICATION

- Light Source:** 1 x Max 6W E27 LED (Included)
- IP Code:** 20
- Dimming:** In-line on/off switch included on cable.
- Dimensions:** Shade: Ø14cm
Shade Height: 16cm
Maximum Horizontal Reach: 72cm
Base: Ø25.5cm
Cable Length: 200cm



For all sales and technical enquiries, please contact:

+44 (0)114 263 4266

info@davidvillagelighting.co.uk

www.davidvillagelighting.co.uk