

louis poulsen

Louis Poulsen PH 3/2 Wall Light

LA8591

SOURCE: <https://www.davidvillagelighting.co.uk/product/Louis-Poulsen-PH-32-Wall-Light/5870>

PRODUCT DESCRIPTION

Designer: Poul Henningsen

Louis Poulsen PH 3/2 Wall Light

The PH 3/2 Wall Light is made from a lovely blown glass lampshade and a stylish chrome structure, versatile for any design scheme. The shade is made from 3 layers, a system that was developed and designed by Poul Henningsen back in the 1920s. The system is based on a logarithmic spiral that works to diffuse the light as it glows outwards.

The light source is also concealed to produce a glare-free light that will create a warm atmosphere. The Louis Poulsen PH 3/2 Wall Light can be used in many spaces, such as lounges, hallways and bedrooms, to give a timeless and vintage touch to the room. The wall light is useful in domestic and professional settings and will look refined and elegant.



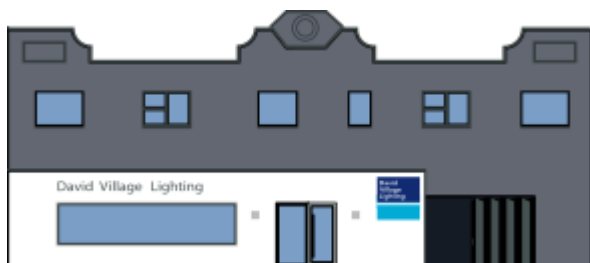
PRODUCT SPECIFICATION

Light Source: 1 x Max 5.7W E14 LED (Excluded)

IP Code: 20

Dimming: Integrated on/off switch on the product.

Dimensions: Shade: Ø29cm
Height: 23.5cm
Depth: 36.7cm
Arm Length: 24cm
Wall Base: Ø14cm



For all sales and technical enquiries, please contact:

+44 (0)114 263 4266

info@davidvillagelighting.co.uk

www.davidvillagelighting.co.uk